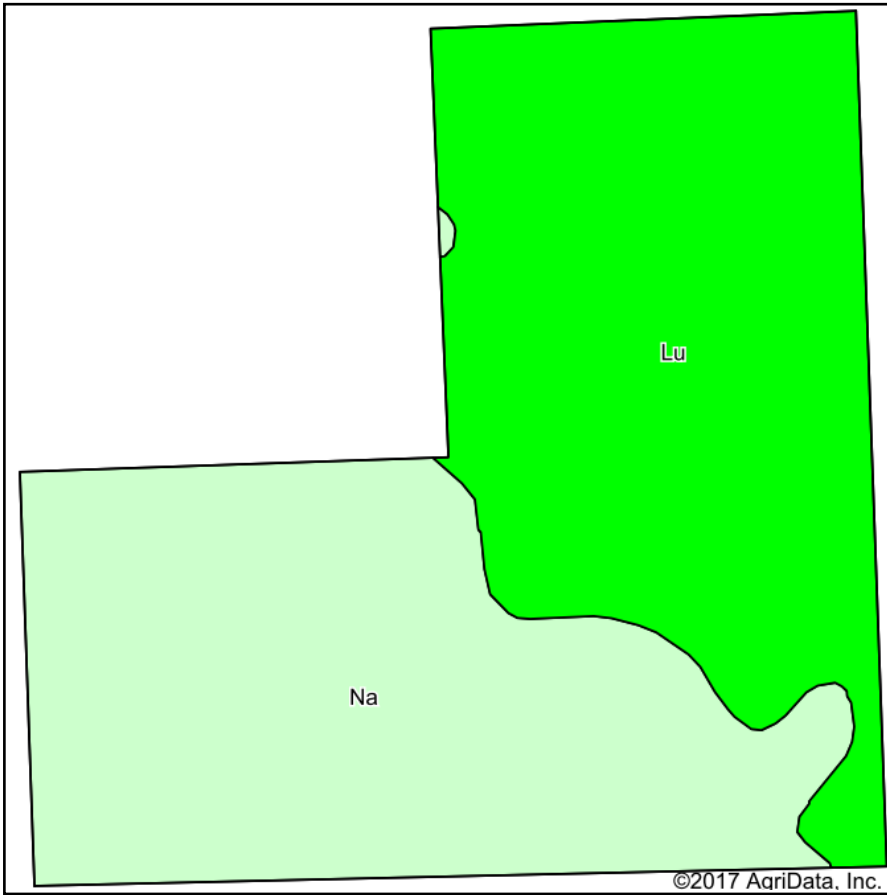
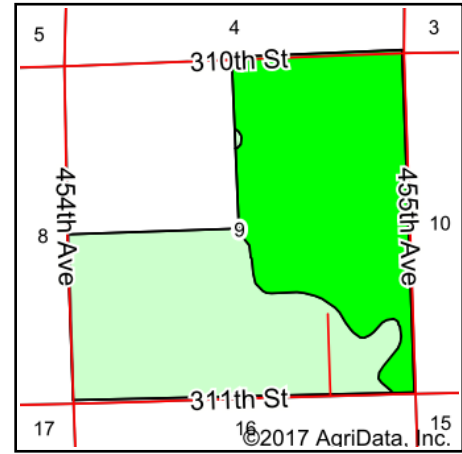


Soils Map



Soils data provided by USDA and NRCS.



State: **South Dakota**
 County: **Clay**
 Location: **9-93N-53W**
 Township: **Meckling**
 Acres: **491**
 Date: **11/10/2017**

Maps Provided By:



© AgriData, Inc. 2017

www.AgriDataInc.com



Area Symbol: SD027, Soil Area Version: 19

Code	Soil Description	Acres	Percent of field	PI Legend	Non-Irr Class *c	Productivity Index	Alfalfa hay	Bromegrass alfalfa	Corn	Oats	Soybeans
Lu	Luton silty clay, 0 to 2 percent slopes, rarely flooded	250.19	51.0%		IVw	60	3.4	5.5	80	44	27
Na	Napa-Luton complex, 0 to 2 percent slopes	240.81	49.0%		VIw	43					
Weighted Average						51.7	1.7	2.8	40.8	22.4	13.8

*c: Using Capabilities Class Dominant Condition Aggregation Method

Soils data provided by USDA and NRCS.